

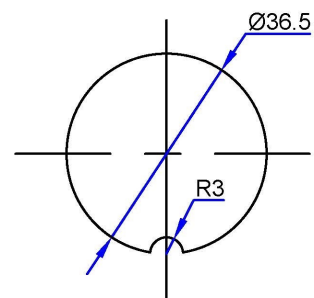
MATERIAL :

- 1. STUD-COPPER
- 2. BODY-BRASS-TIN PLATED
- 3. EYEBOLT-BRASS-TIN PLATED

POS/序号	Drawing No/图号	DESCRIPTION/名称	MATERIAL/材料	PCS/数量
1		Eye bolt / 拉紧销子	Brass/黄铜	1
2		Hex Nut 3/8\"/>3/8\"螺母	Stainless steel/不锈钢	1
3		Spring washer/ 弹垫	Stainless steel/不锈钢	1
4		Terminal/ 拉紧端子	Brass/黄铜	1
5		Plain gasket/ 胶垫	NBR/丁腈	1
6		Porcelain/ 瓷瓶	Porcelain/ 陶瓷	1
7		Plain gasket/ 胶垫	NBR/丁腈	1
8		Spin-grip nut/ 花篮	Steel/弹簧钢	1
9		Flat washer/ 平垫圈	Stainless steel/不锈钢	1
10		Brass washer/ 黄铜垫圈	Brass/黄铜	2
11		Hex Nut 3/8\"/>3/8\"螺母	Brass/黄铜	3
12		Stud/ 导电螺杆	Copper/紫铜	1

Technical requirements:

- 1. Rated Voltage=1.2KV
- 2. Rated Current=125A
- 3. Creepage Distance ≥ 25mm
- 4. Lighting Impulse withstand voltage=30KV
- 5. Power-frequency withstand voltage (Dry) =10KV



Tank hole dimensions

	Sign	Date	ANSI-1.2KV-125A		Weight	Scale
	Design	Song				
Proofread	Paul		LV BUSHING	Drawing number		
Check		2025. 7. 1	Transformer bushing		AsiaPower	